
















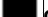







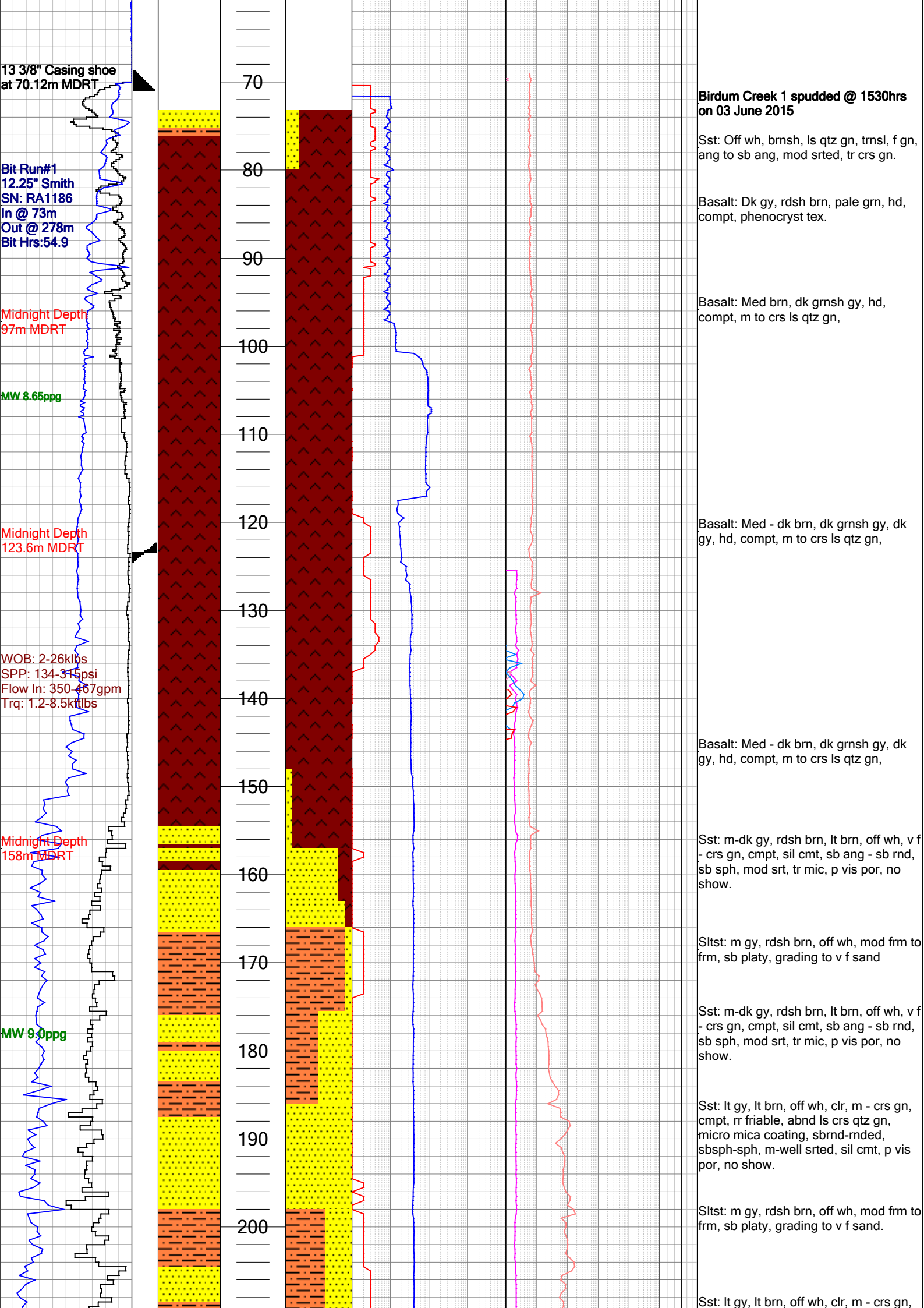


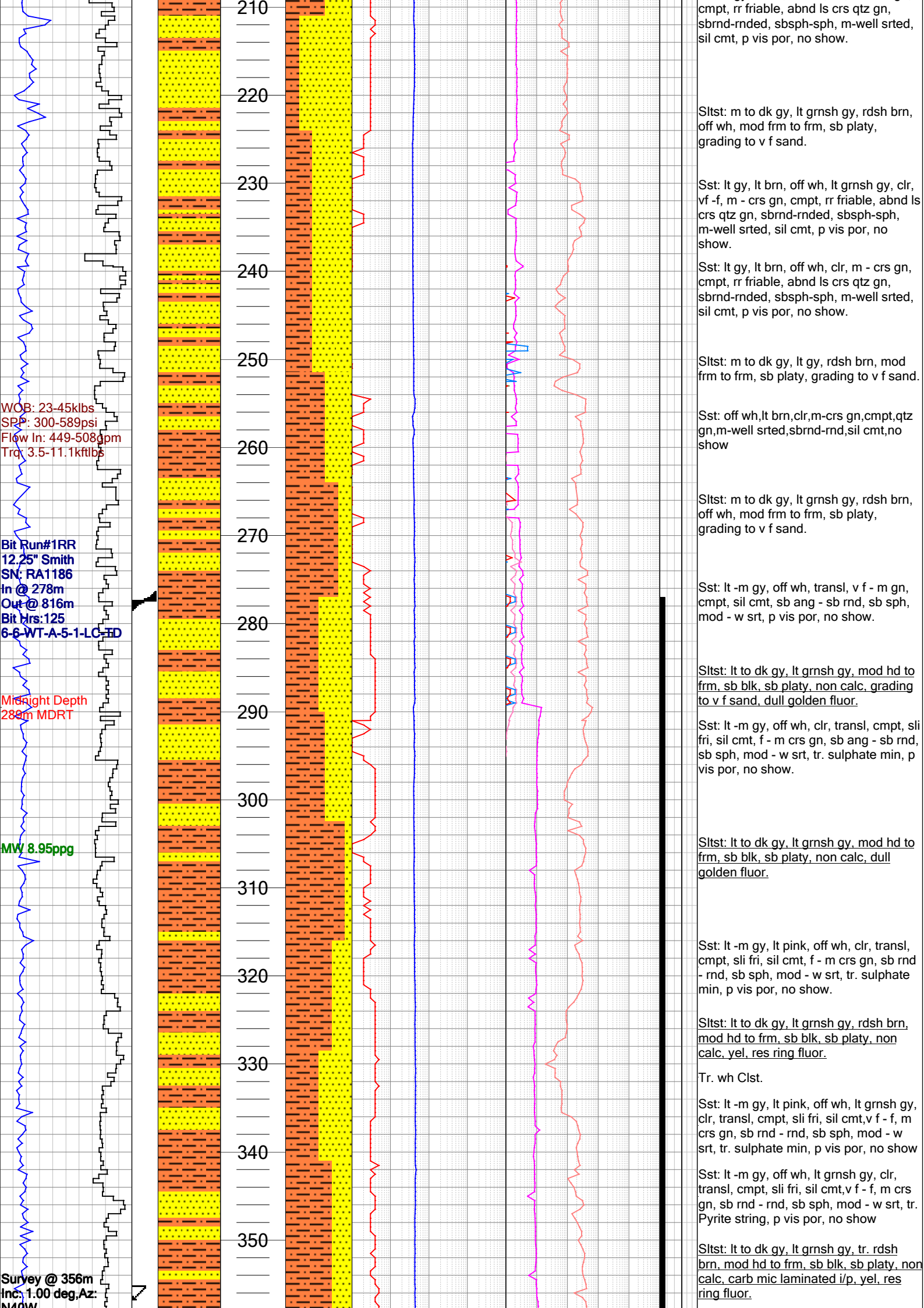


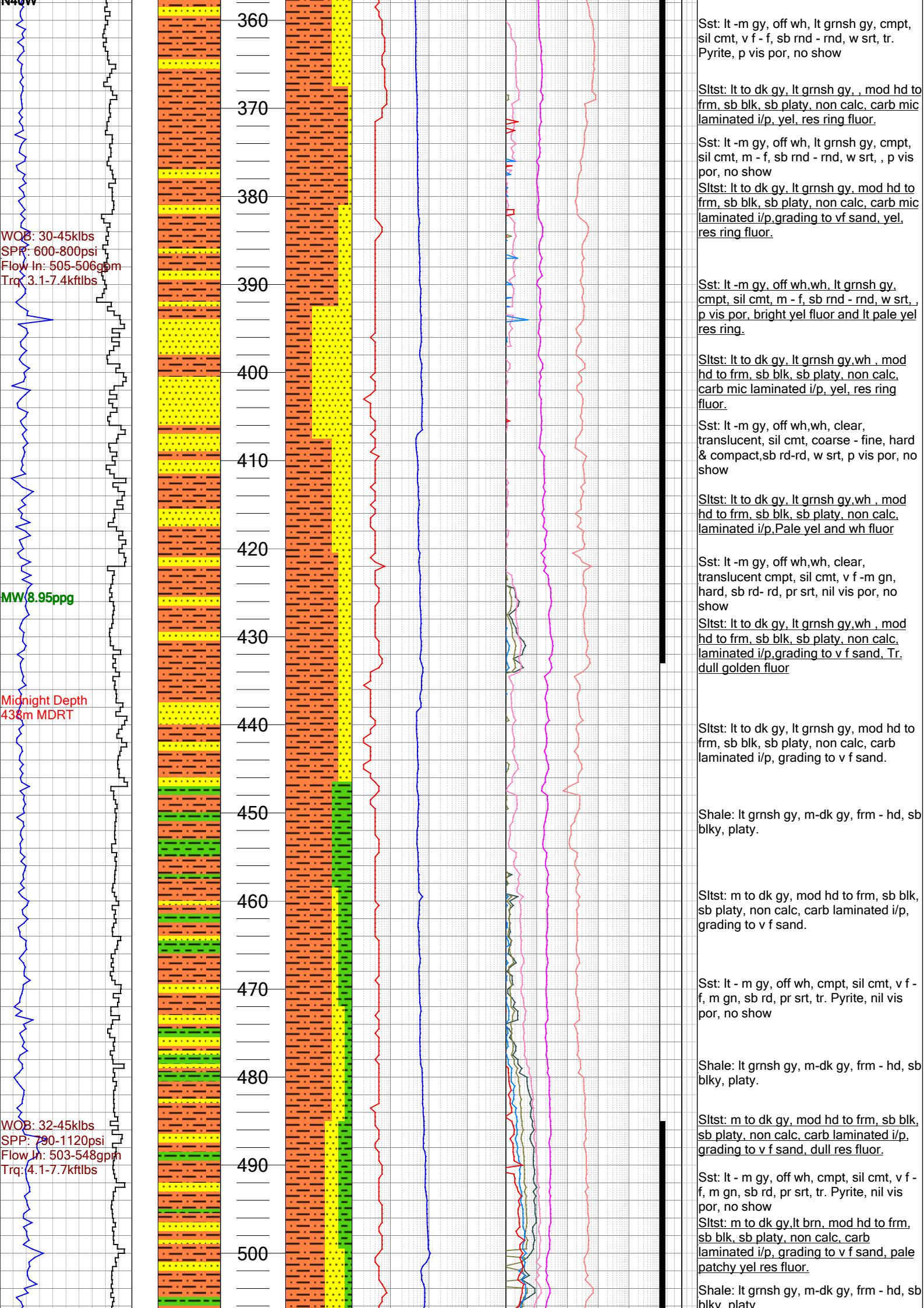
QUALIFIERS, ACCESSORIES AND FOSSILS													
	Argillaceous		Gravelly/Pebbly		Anhydritic		Ferruginous		Cherty		Foram		Echinoid
	Silty		Calcareous		Gypsiferous		Carbonaceous		Tuffaceous		Shell Fragements		Oolitic
	Sandy		Dolomitic		Micaceous		Bituminous		Feldspar		Nummulites		
	Coarsely Sandy		Limestone Bed		Pyritic		Glauconitic		Siliceous				

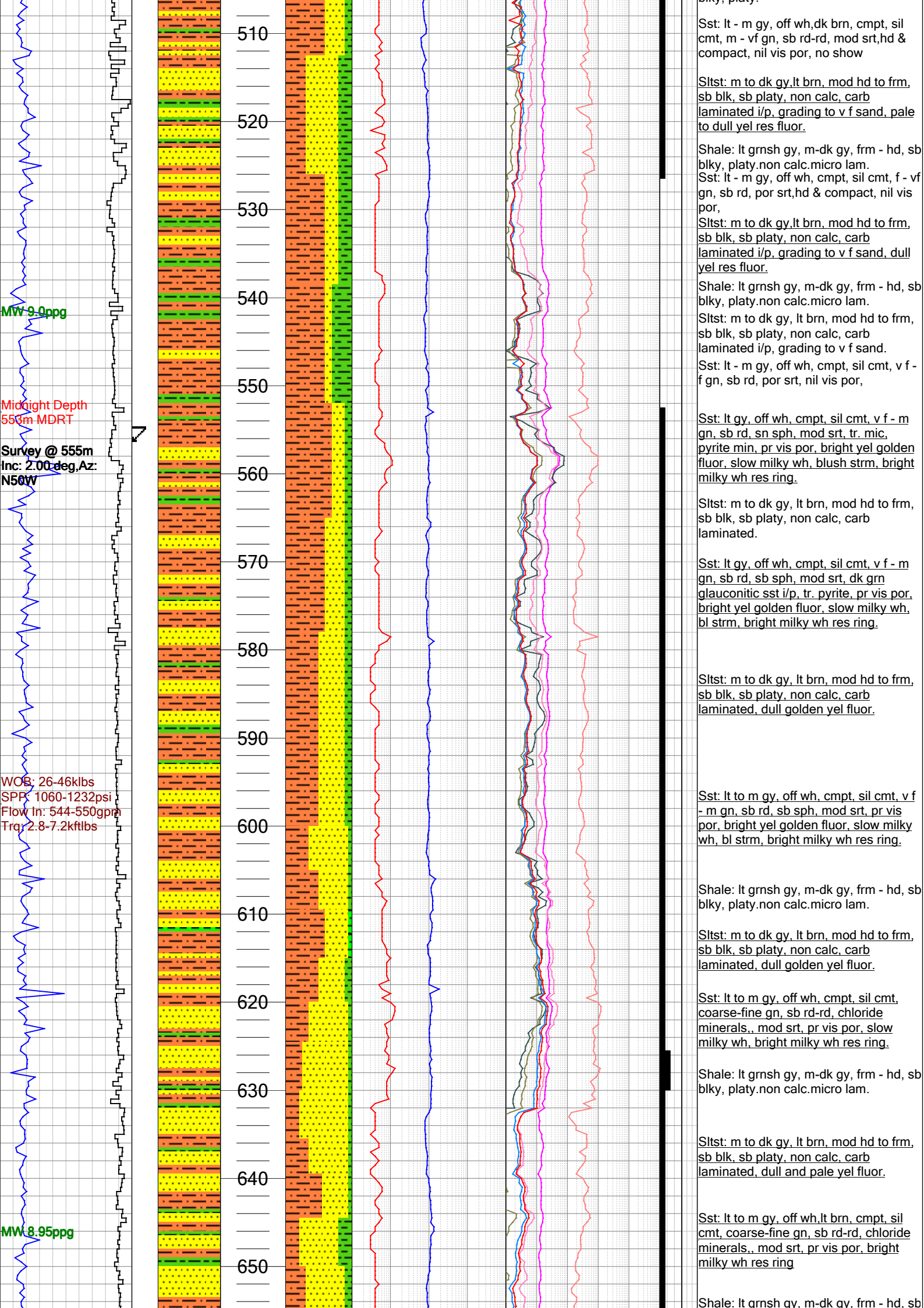
Company: Pangaea Resources Well: Birdum Creek 1 Location: McArthur/Beetaloo Spud Date: 03 June 2015 Scale: 1:500

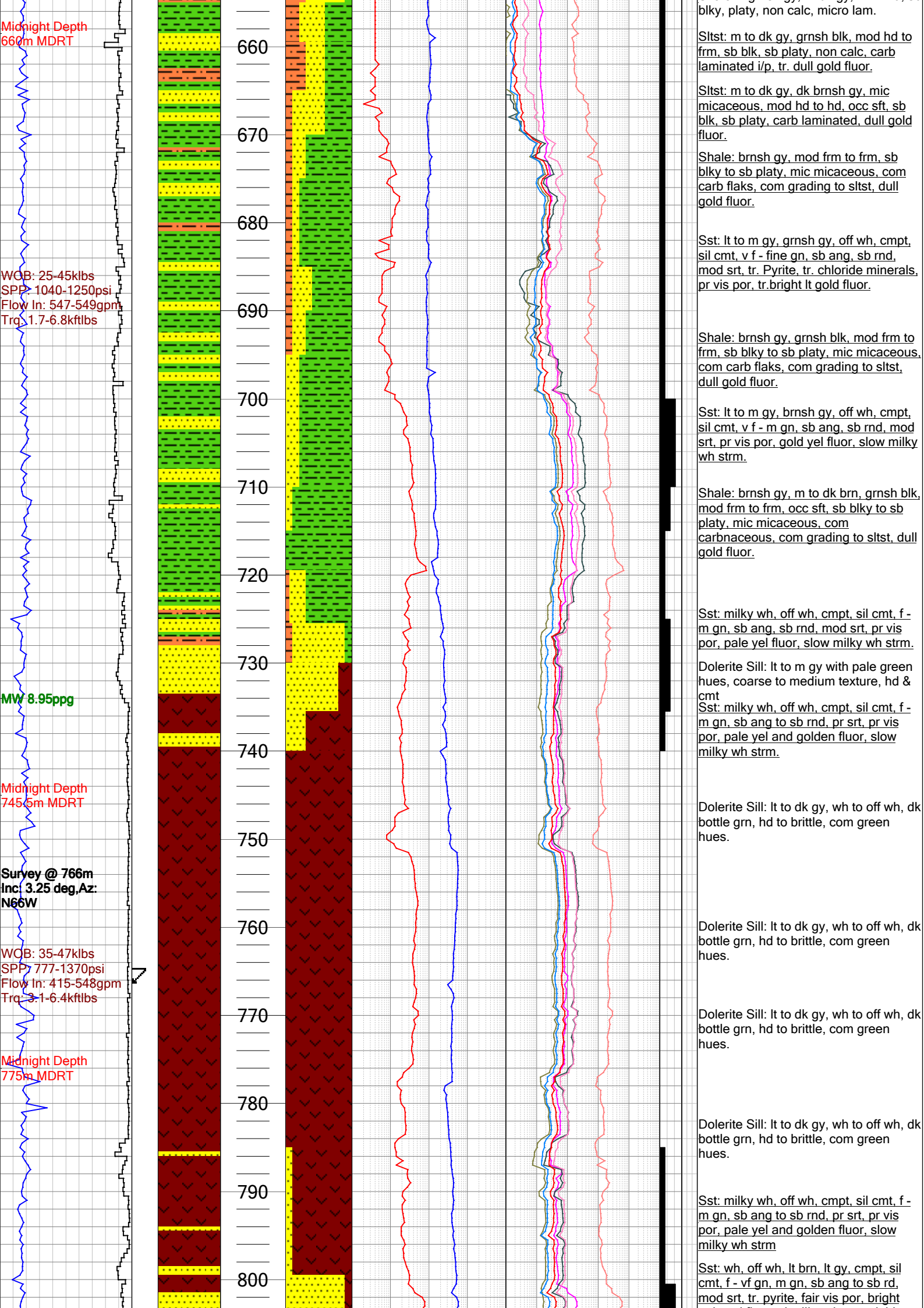
[illegible]

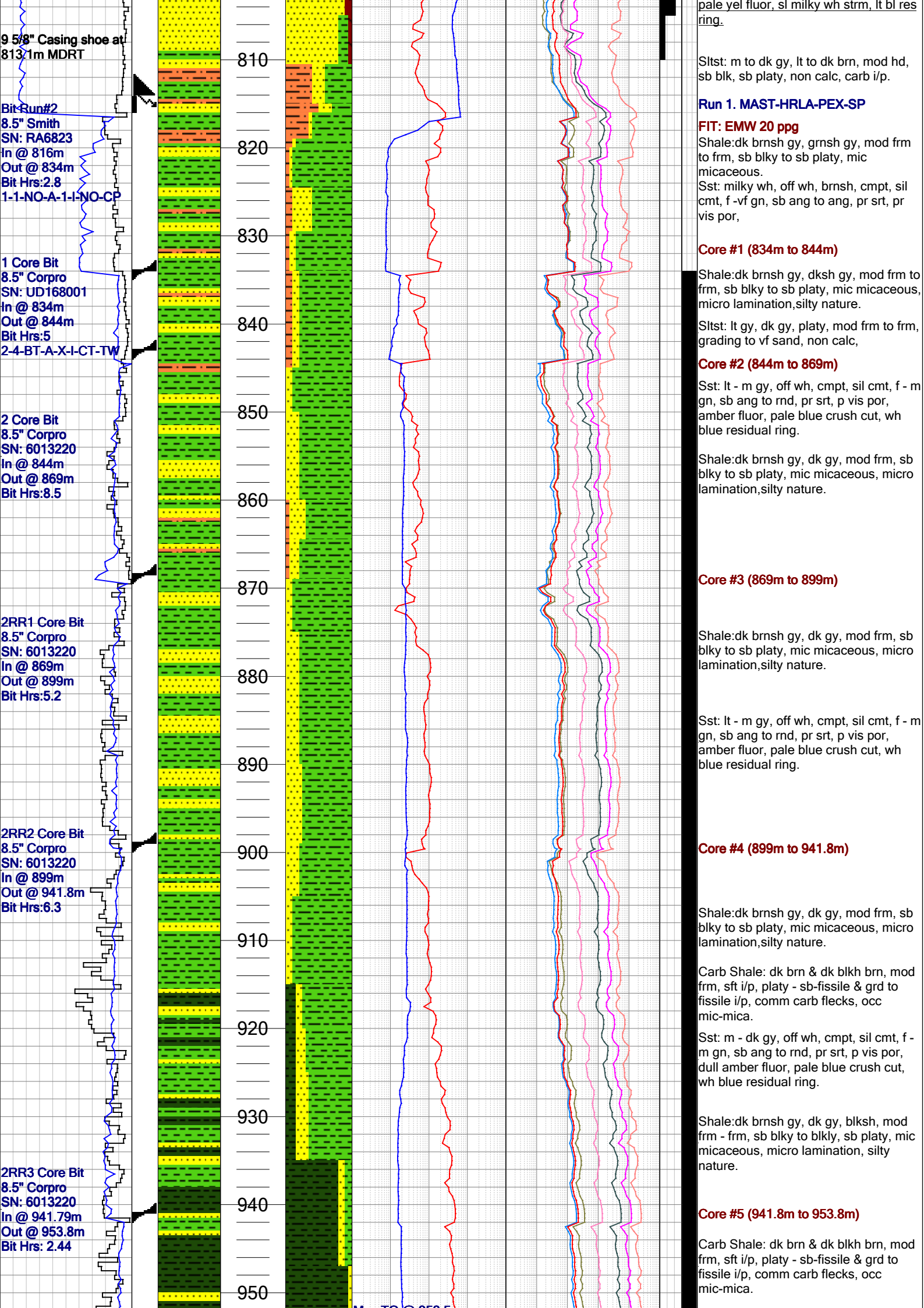


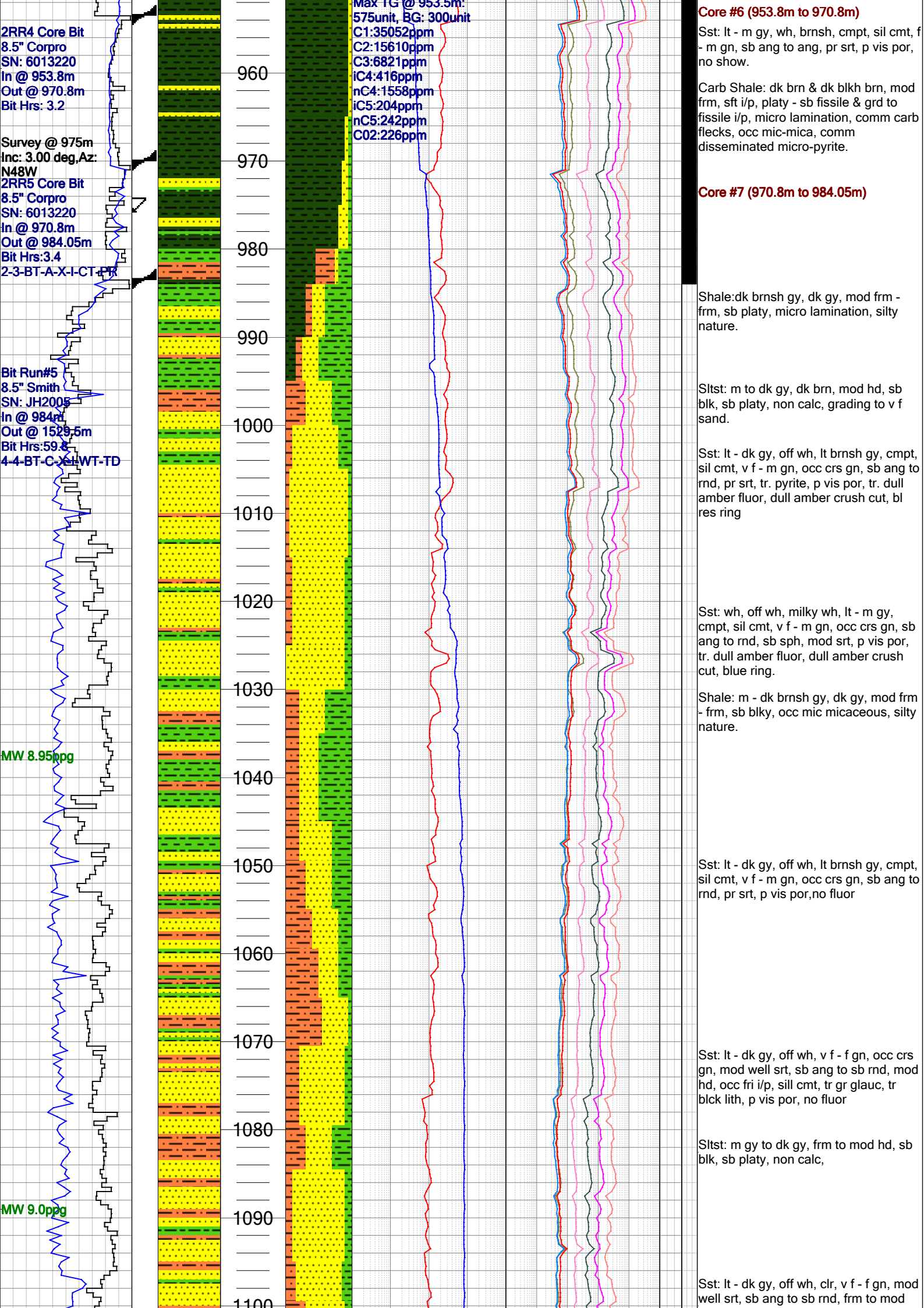


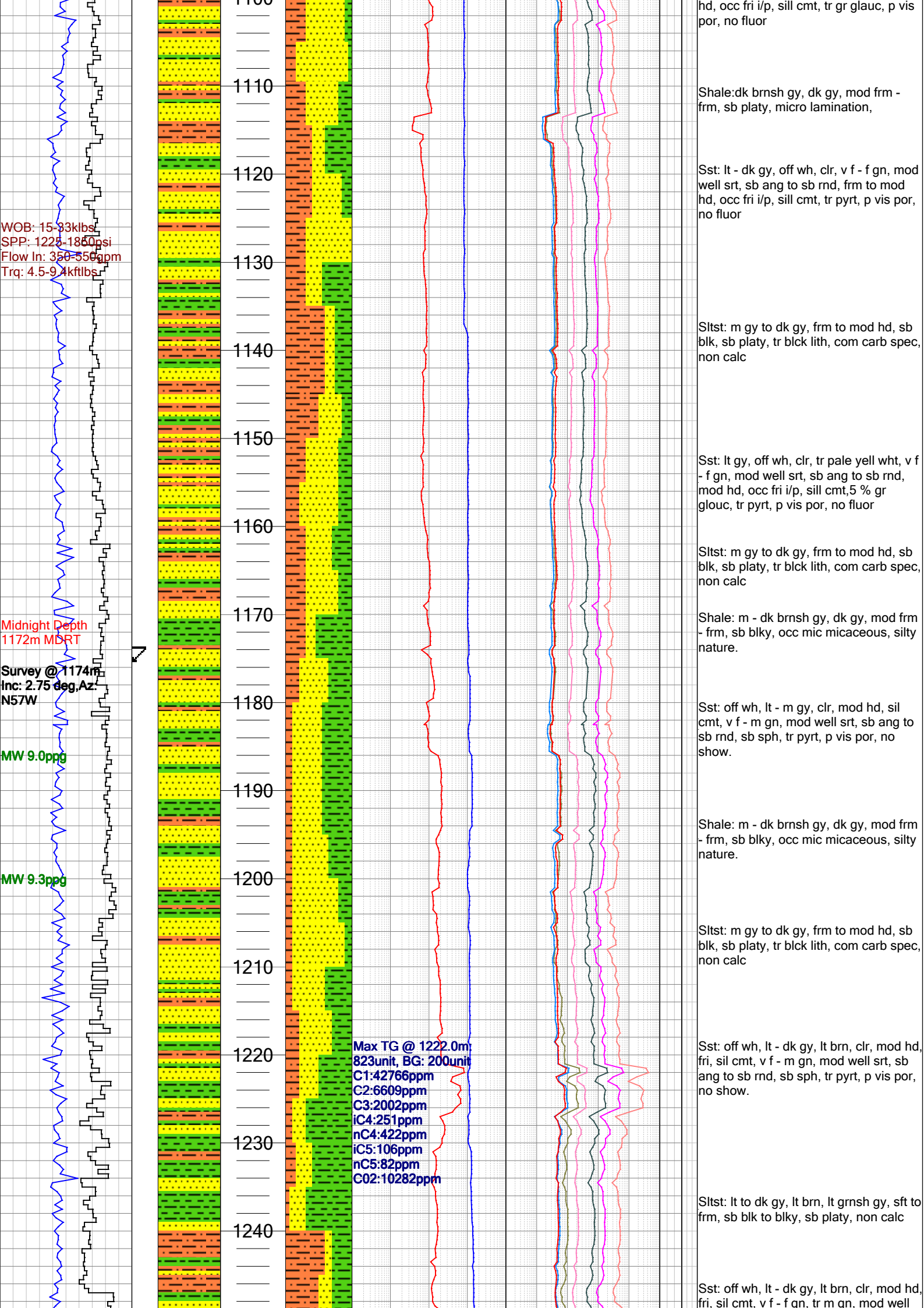


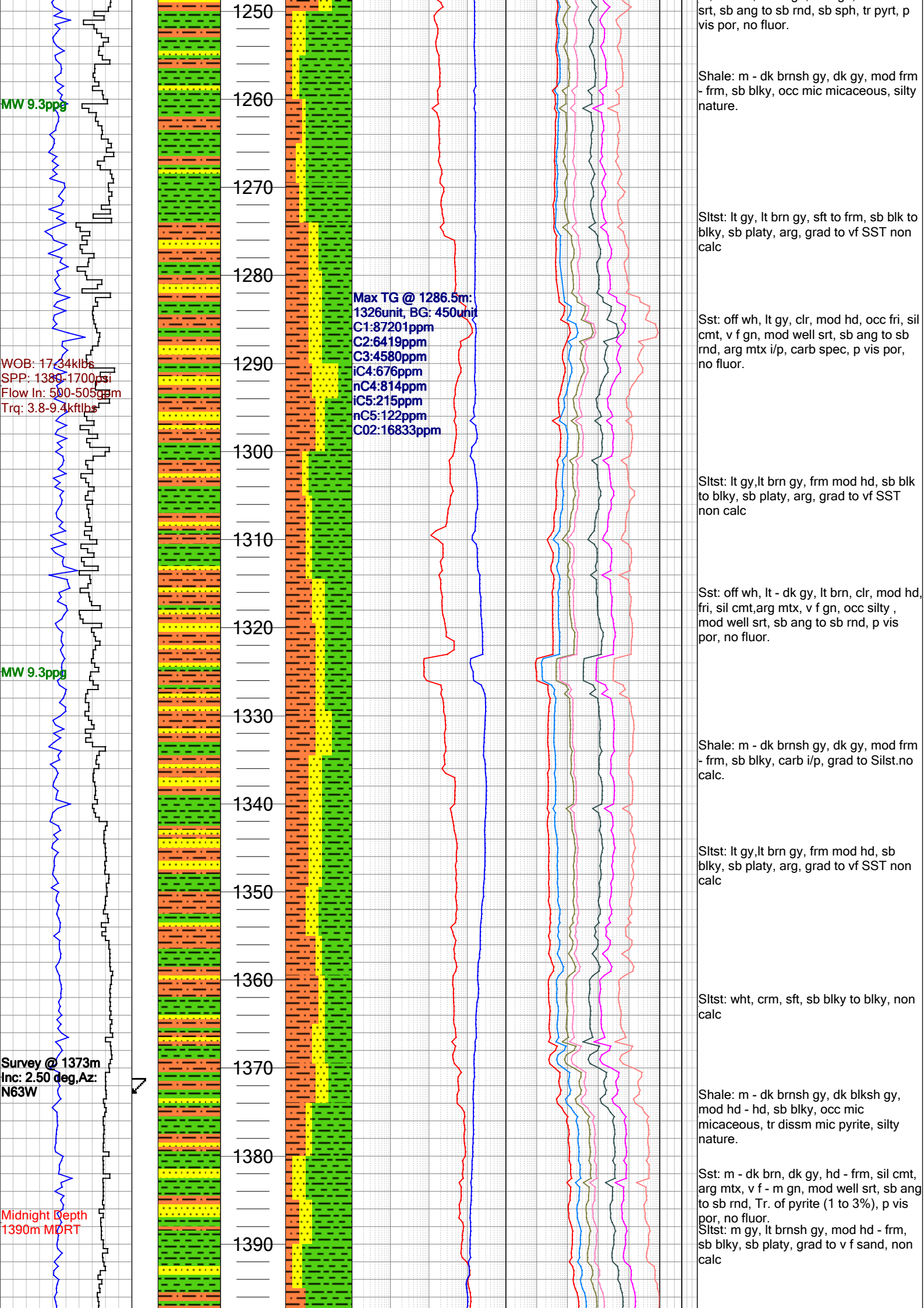


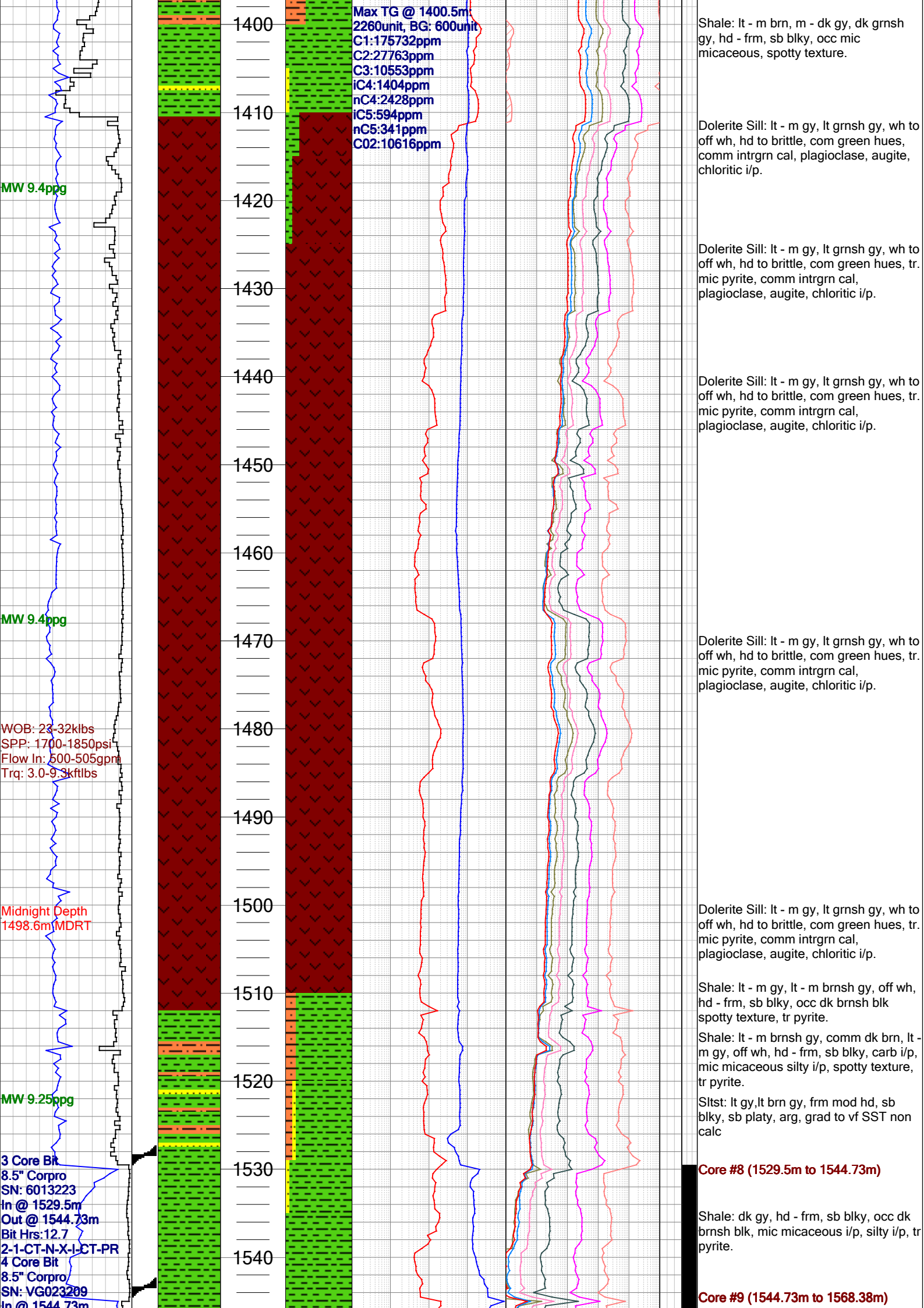












Out @ 1568.3m
Out @ 1568.3
Bit Hrs: 9.4
1-1-NO-A-X-I-NO-PR

MW 9.05ppg

Midnight Depth
1568.3m MDRT

MW 9.10ppg
4RR1 Core Bit
8.5" Corpro
SN: VG023209
In @ 1568.3m
Out @ 1628.38 m
Bit Hrs: 14.8
1-1-NO-A-X-IN-NO-C
P

MW 9.5ppg

WOB: 2.3 - 7.9 klbs
SPP: 65 - 668 psi
Flow In: 231-232 gpm
Trq: 3.7 - 6 kftlbs

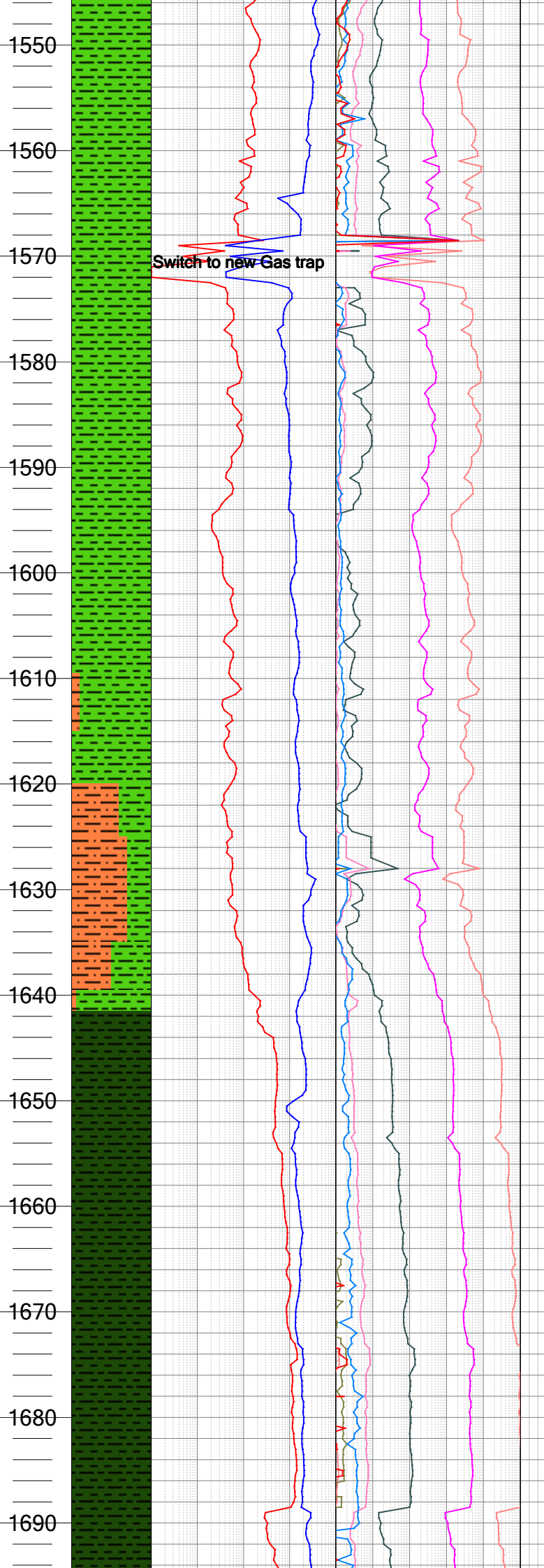
Midnight Depth
1614m MDRT

4RR2 Core Bit
8.5" Corpro
SN: VG023209
In @ 1628.38m
Out @ 1688.39 m
Bit Hrs: 6.3
1-1-NO-A-X-IN-NO-C
P

Midnight Depth
1688.38m MDRT

MW 9.10ppg

WOB: 1.1 - 1.9 klbs
SPP: 115 - 694 psi
Flow In: 229 - 232 gpm
Trq: 1.7 - 6.6 kftlbs
4RR3 Core Bit



Shale: dk gy, hd - frm, sb blk, occ dk
brnsh blk, mic micaceous i/p, silty i/p,
Core #10 (1568.38m to 1628.38m)

Shale: dk gy, hd - frm, sb blk, occ dk
brnsh blk, mic micaceous i/p, silty i/p,

Shale: dk gy, hd - frm, sb blk, occ dk
brnsh blk, mic micaceous i/p, silty i/p,

Siltst: lt gy, frm mod hd, sb blk, sb
platy,carb mtx i/p, arg, grad to vf SST,
non calc

Core #11 (1628.38m to 1688.39m)
Shale: dk gy, hd - frm, sb blk, occ dk
brnsh blk spotty texture, tr pyrite.grad
to silty.non calc

Carbonaceous Shale: dk gy, hd - frm,
sb blk,sb plty, mic micaceous i/p,
carb i/p,.non calc

Carbonaceous Shale: dk gy, hd - frm,
sb blk,sb plty, mic micaceous i/p,
carb i/p, tr pyrite,non calc

Core #12 (1688.38m to 1719.93m)

